

October 16, 2014 – Project Wins Two ENR MidAtlantic Best Project Awards

ENR MidAtlantic announced the winners of its Best Projects of 2014. The Washington Monument Repair project won **“Best Project” in the Culture/Worship Category and an Award of Merit for Safety**. The project realized over 75,000 man hours with no OSHA recordable injuries or accidents, even though 90% of the work was performed on scaffolding at exposed elevations of up to 555 feet.

May 12, 2014 – Washington Monument Reopens on Schedule

The National Park Service held a ceremony to mark the reopening of the Monument following successful completion of the earthquake repairs project. Perini completed the project several days ahead of schedule and within budget. In all, Perini oversaw approximately 1,100 feet of mortar patches, over 100 Dutchman repairs utilizing the original quarry marble salvaged from previously demolished buildings, and between 500 and 600 feet of epoxy injections. In addition, over 50 saddle anchors were installed on the pyramidion (top) panels to ensure that a future earthquake would not send the marble slabs sliding to the ground. Perini’s team included Grunley Construction, Universal Builders Supply, and Lorton Stone, LLC.

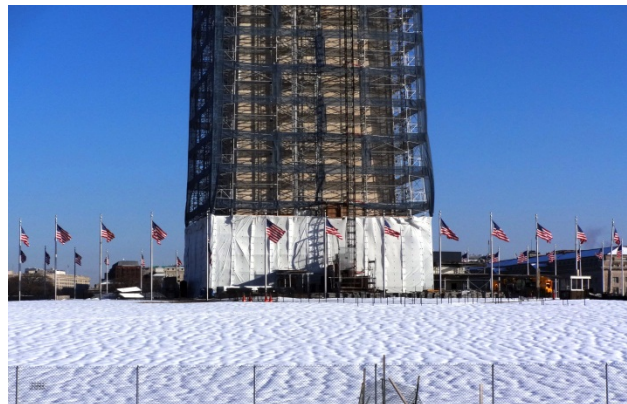


March 21, 2014 – Craftmanship Award from the Washington Building Congress

February 10, 2014 - Additional Repair Work Added to Project Scope



After the scaffolding began to come down, utilizing project savings and additional funding secured by the National Park Service, the project scope was modified to include additional mortar repairs at the 0 to 20 foot level. This required tenting and installation of temporary heating to allow work to proceed during one of the coldest winters on local record.



November 4, 2013 – Preparations Begin for Dismantling Scaffolding

After lighting up the Washington Skyline every night for the past 4 months, the scaffolding with its decorative scrim began to be dismantled as repairs at the upper levels were completed.

Link to Article: http://www.washingtonpost.com/local/washington-monument-will-turn-off-the-lights-as-repairs-move-closer-to-completion/2013/10/31/022366c2-423f-11e3-8b74-d89d714ca4dd_story.html

July 8, 2013 – Washington Monument Earthquake Repair Project Reaches Milestone



Photo courtesy of Tami Heilemann, DOI

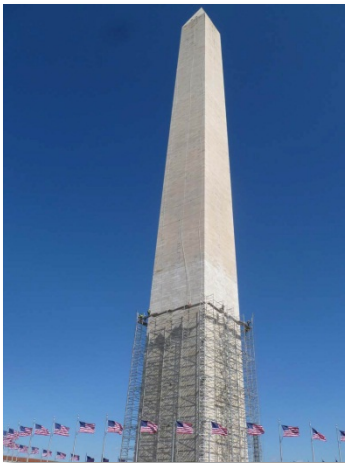
Perini Management Services' Washington Monument Earthquake Repair project reached another milestone today with the official lighting of the monument scrim, designed to shroud the scaffolding that has been erected to enable access to workers. The covering is similar to the one used for a major restoration of the Monument in 1999-2000. It mimics the stone block façade of the monument, which enables this iconic structure to continue to symbolize the strength and ingenuity of the American people while it is closed for repairs.

Scaffolding erection began on February 20, 2013, following several months of planning and site preparation work. The steel enclosure rose steadily and was topped out on May 15th when the National Park Service held a press conference to mark the milestone.



Test repairs have been made within the past few weeks and actual repair work is about to begin.

The Monument is expected to reopen to the public on May 12, 2014.



March 14, 2013



April 9, 2013



May 2, 2013